

# 165 Model Low Differential Pressure Transducer

**alpha**<sup>∞</sup>  
instruments



The Model 165 Series are low range differential pressure transducers and transmitters. Each unit features a stainless steel pressure sensor, a stainless steel enclosure and a plastic cover, which meets the NEMA 1 requirement. The electrical terminal screws and adjustment holes are concealed beneath a detachable plastic cap. All units are fully protected against short circuiting and incorrect wiring.

The Model 165 Series are available for full scale pressure range from 0 to 0.1"WC till 0 to 100"WC. Both unidirectional and bidirectional pressure ranges are offered. The output of the Model 165 Pressure Transducer is available in two versions: 0 to 5VDC and 0 to 10VDC, where 0VDC is true zero without offset. The output of Model 165 Pressure Transmitter is 4 to 20 mA. All units are temperature compensated. The accuracy can be 0.6%, 0.4% or 0.25% at room temperature.

The patented variable capacitance pressure sensor is constructed by stainless steel and glass, no glue or other organics. That provides excellent performance, corrosion resistance and long-term stability.

Additionally, our unique production setup allows us to accommodate special orders for nonstandard pressure ranges (e.g. -0.5"WC to +3.5"WC).

## Model 165 Specifications

### Performance Data

Accuracy* (at room temp)	Standard ±0.60%FS	Optional ±0.40%FS	Optional ±0.25%FS
Non-Linearity (BFSL)	±0.58%FS	±0.37%FS	±0.20%FS
Hysteresis	±0.10%FS	±0.10%FS	±0.10%FS
Non-Repeatability	±0.10%FS	±0.10%FS	±0.10%FS
Thermal Effects: Zero/Span Shift (°F)	±0.025%FS	±0.02%FS	±0.015%FS
Compensated Range	40 to 170° F (4 to 77°C)		
Maximum Line Pressure	15PSI(100kPa)		
Overpressure	15PSI(100kPa) in Positive or Negative Direction for all Ranges		
Stability	±0.5% FS/YR		
Warm-up Time	5 seconds to meet specifications		
Position Effect	Each unit is calibrated in the vertical position. For best accuracy, adjust zero of the unit if it is mounted in other position. It is not necessary to adjust the sensitivity.		

\* RSS of Non-Linearity, Hysteresis, and Non-Repeatability.

## Environmental Data and Physical Description

Operating Temperature	0 to 170°F (-18 to 77°C)
Storage Temperature	-40 to 185° F(-40 to 85°C)
Electrical Termination	Terminal Strip
Pressure Fittings	3/16" O.D. barbed brass for 1/8" I.D. push-on tubing
Zero & Span Adjustment	Accessible under the small cap
Pressure Media	Typically air or similar non-conducting gases
Enclosure	Stainless Steel and PC+ABS Alloy, 94V-0 Rated
Weight	5.8OZ/165g
Installation	See Diagram 1 for outline and dimensions.

## Applications:

- HVAC and VAV Control
- Clean Rooms and Isolation Rooms
- Duct Static Pressure Measurement
- Draft Control and Fume Hood Control
- Furnace Air Flow Control
- Power Plant Air Flow Monitor and Control

## Features

- 15 PSI Over Pressure
- Incorrect Wiring Protection
- Nonstandard Pressure Ranges
- True Zero Output for Voltage Unit
- Meets CE Conformance Standards
- RoHS Compliant

Visit us Online:

[www.alphainstruments.com](http://www.alphainstruments.com)

E-mail: [sales@alphainstruments.com](mailto:sales@alphainstruments.com)

**978-264-2966**

# Model 165 Specifications

## Electrical Data (Voltage)

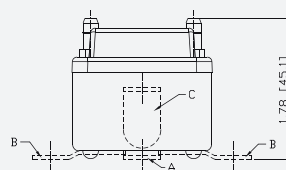
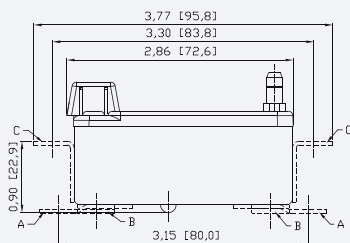
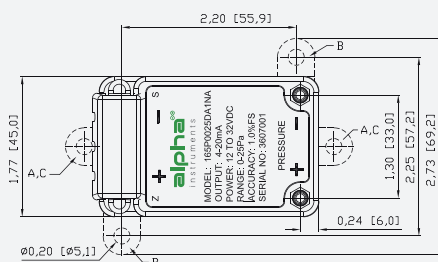
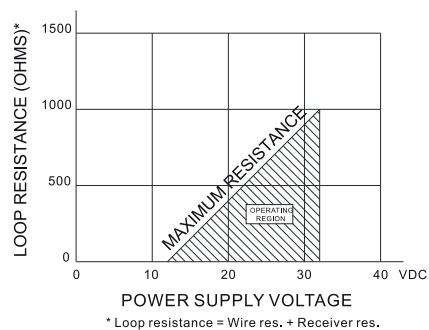
Circuit 3-Wire (+EXC, -EXC, OUTPUT), Protected against incorrect wiring  
 Excitation 12-32VDC/12-30VAC  
 Output\* 0-5VDC, 0-10VDC  
 Output Impedance  $\leq 5.0$  OHMS

- \* Zero output: factory set at  $\pm 25$ mV(0-5VDC),  $\pm 50$ mV(0-10VDC)  
 Span output: factory set at  $\pm 25$ mV(0-5VDC),  $\pm 50$ mV(0-10VDC)  
 Calibrate with a 50K OHM load. Operable with a load greater than 5K OHM for 0-5VDC output, greater than 10K OHM for 0-10VDC output.

## Electrical Data (Current)

Circuit 2-Wire (+EXC, -EXC), Protected against incorrect wiring  
 Excitation 12-32VDC (see diagram 2 for maximum loop resistance)  
 Output\*\* 4-20mA  
 Bidirectional Output at Zero 12mA as standard  
 External Load 0-1000 OHM

- \* Zero output: factory set at  $\pm 0.08$ mA  
 Span output: factory set at  $\pm 0.08$ mA  
 Calibrated with a 250 OHM load and a 24VDC supply voltage.



DIMENSIONS ARE IN: INCH [mm]  
 \* A CURRENT OUTPUT UNIT IS SHOWN.

Diagram 1

## Ordering Information

Code all blocks in table.

Example: 165W00R1DA6NA for 165 Transmitter, 0-0.1 in. WC Range, Unidirectional, 4-20mA Output, 0.6% Accuracy, No Calibration Certificate, Mounting Flanges "A".

1 6 5							
<b>Model</b> 165	<b>Unit</b> P: Pascal W: in. W.C.	<b>Range</b> NNNN	<b>Pressure Type</b> Differential D: Unidirectional B: Bidirectional	<b>Output</b> A: 4-20mA B: 0-5VDC C: 0-10VDC	<b>Accuracy</b> 6: 0.6%FS 4: 0.4%FS 2: 0.25%FS	<b>Certificate</b> Y: (with) N: (without)	<b>Mounting Flanges</b> See Diagram 1

### Pressure Unit/Range/Type

#### in. W.C. (Unidirectional)

W00R1D=0 to 0.1 in. W.C.  
 W0R25D=0 to 0.25 in. W.C.  
 W00R5D=0 to 0.5 in. W.C.  
 W0001D=0 to 1 in. W.C.  
 W02R5D=0 to 2.5 in. W.C.  
 W0005D=0 to 5 in. W.C.  
 W0010D=0 to 1 in. W.C.  
 W0025D=0 to 25 in. W.C.  
 W0050D=0 to 50 in. W.C.  
 W0100D=0 to 100 in. W.C.

#### in. W.C. (Bidirectional)

W0R05B=-0.05 to 0.05 in. W.C.  
 W00R1B=-0.1 to 0.1 in. W.C.  
 W0R25B=-0.25 to 0.25 in. W.C.  
 W00R5B=-0.5 to 0.5 in. W.C.  
 W0001B=-0.1 to 0.1 in. W.C.  
 W02R5B=-2.5 to 2.5 in. W.C.  
 W0005B=-5.0 to 5.0 in. W.C.  
 W0010B=-10 to 10 in. W.C.  
 W0025B=-25 to 25 in. W.C.  
 W0050B=-50 to 50 in. W.C.

#### Pascal (Unidirectional)

P0025D=0 to 25 Pa  
 P0050D=0 to 50 Pa  
 P0100D=0 to 100 Pa  
 P0250D=0 to 250 Pa  
 P0500D=0 to 500 Pa  
 P1000D=0 to 1000 Pa  
 P2500D=0 to 2500 Pa  
 P5000D=0 to 5000 Pa  
 P100CD=0 to 10000 Pa  
 P250CD=0 to 25000 Pa

#### Pascal (Bidirectional)

P0010B=-10 to 10 Pa  
 P0025B=-25 to 25 Pa  
 P0050B=-50 to 50 Pa  
 P0100B=-100 to 100 Pa  
 P0250B=-250 to 250 Pa  
 P0500B=-500 to 500 Pa  
 P1000B=-1000 to 1000 Pa  
 P2500B=-2500 to 2500 Pa  
 P5000B=-5000 to 5000 Pa  
 P100CB=-10000 to 10000 Pa

\* Specifications subject to change without notice. If you don't see what you need here, please contact us.

Tel: 978-264-2966 • E-mail: sales@alphainstruments.com • Web: alphainstruments.com